



the future of exchanging digital construction product data

Christian Donath, November 2020

Life cycle method basis for decarbonization of buildings

We need the LCA...but...



- ★ downstream values must exceed upstream efforts
- ★ allow sustainability without cost increase (affordable housing)

Affordable solutions
for manufacturers AND building owners

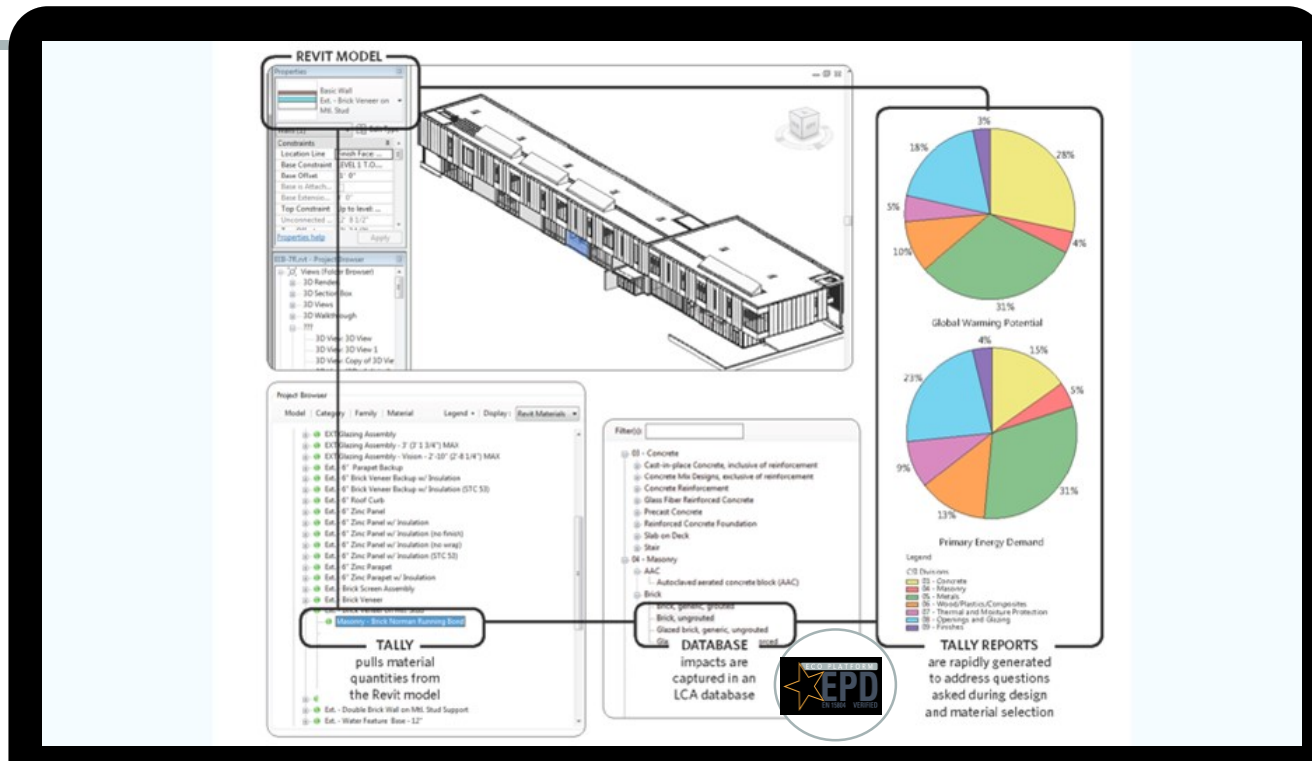
How to keep costs low



- ★ harmonized solution
(common format, single data-source)
- ★ quick solution
(based on existing method, no lengthy developments)
- ★ automatization
(let tools do the work to make it quick & affordable)
- ★ digitalization
(innovative & comprehensive tools)

Mainstreaming LCA method

Architects are no LCA experts

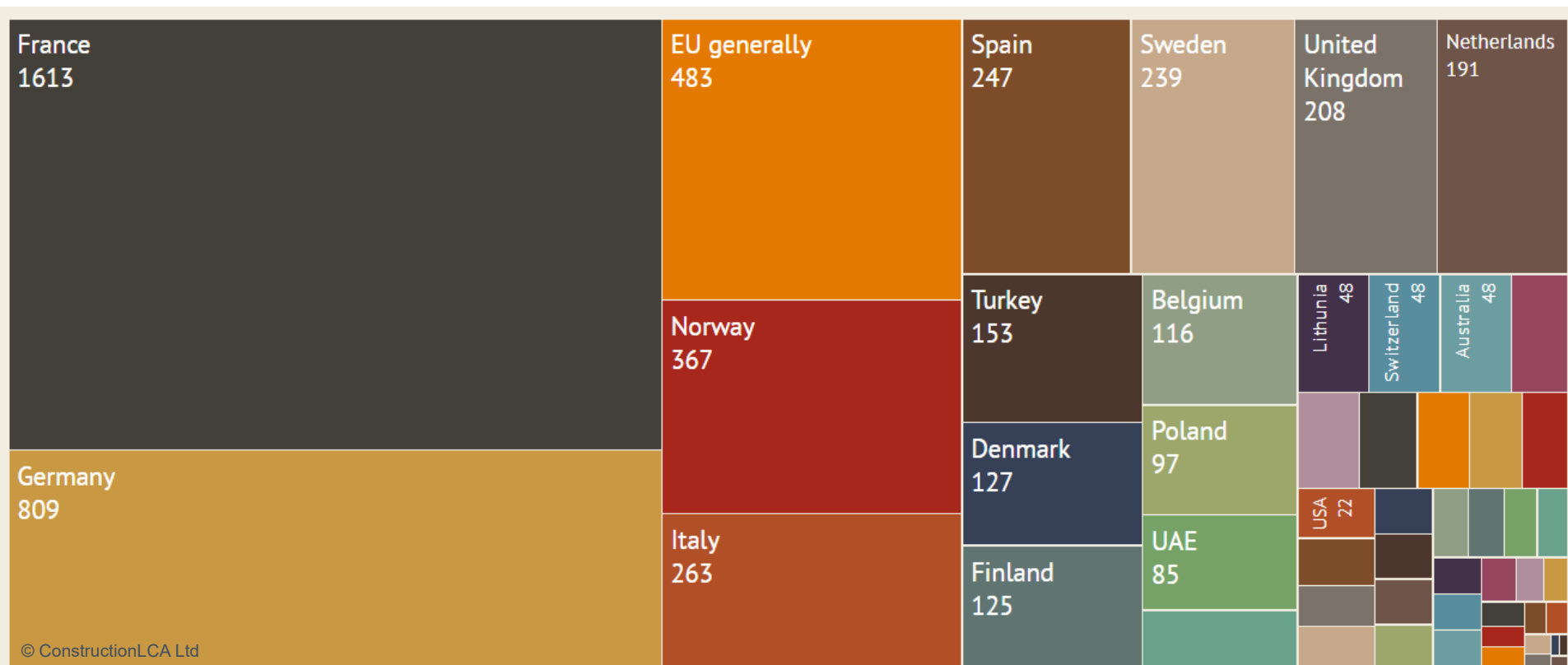


Example „Tally” – an Autodesk Revit plugin

Required Data for building and construction LCA

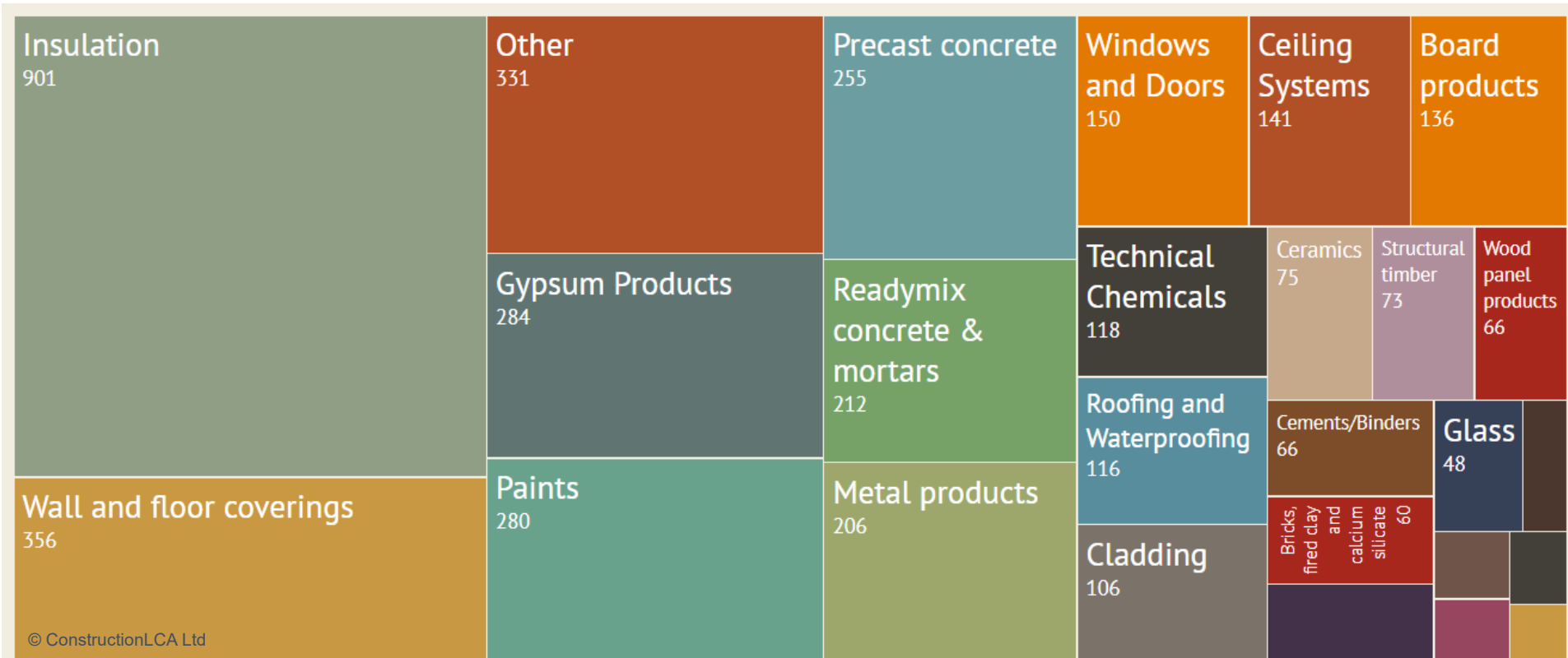
EPD available for most countries...

ECO EPD by Country (2020)



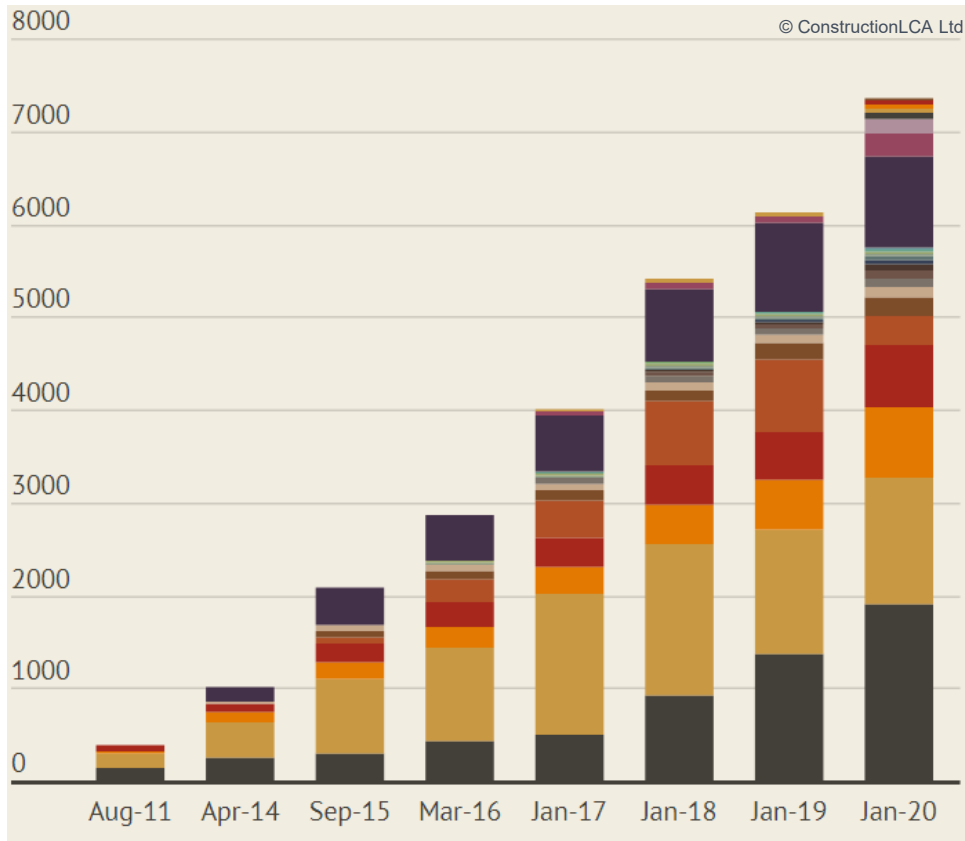
... and for most product categories...

ECO EPD by Product Type (2019)



...but not for all products!

EPD according to EN 15804 (2020)



★ 7,000+ EPD

★ “product families” cover many different products

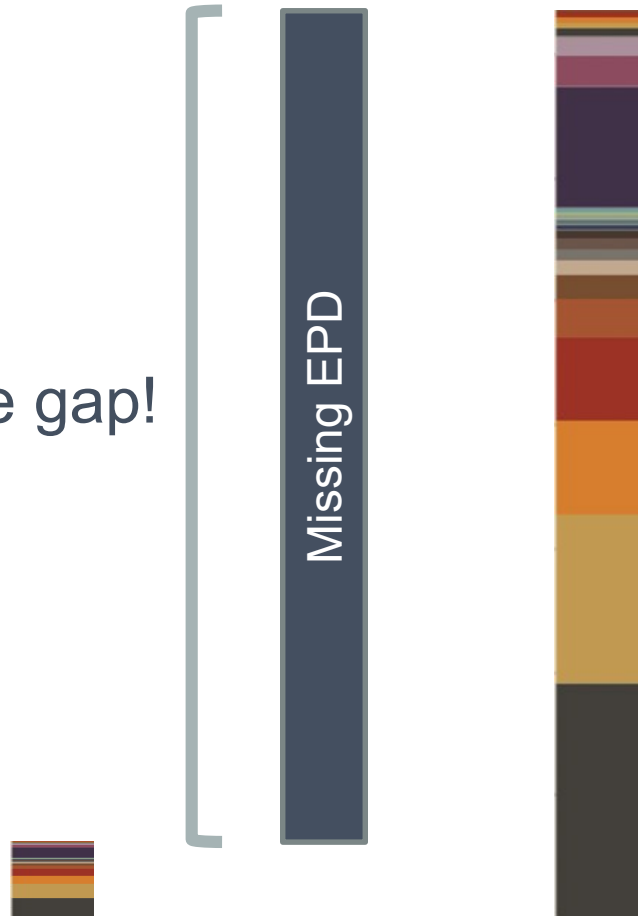
(example from France:
1.700 EPD represent over
600.000 individual products)

...but not for all products!

EPD according to EN 15804 (2020)



Huge gap!



Having approx. 12 mio.
Construction Products in the
European market,
most EPD are still missing!

Required Data for LCA

Consistent generic and specific data

Consistent data approach needed!

Public
National Databases



Voluntary
3rd party verified EPD



Generic Data

Complete data for all
building components

Product neutral data

Specific Data

The more specific the data,
the more precise the result

For specific scenarios

Open International Data Network

based on ILCD+EPD format



consistent approach for
generic data from public databases
and specific data from EPD

✓ In Data



Data from single data source

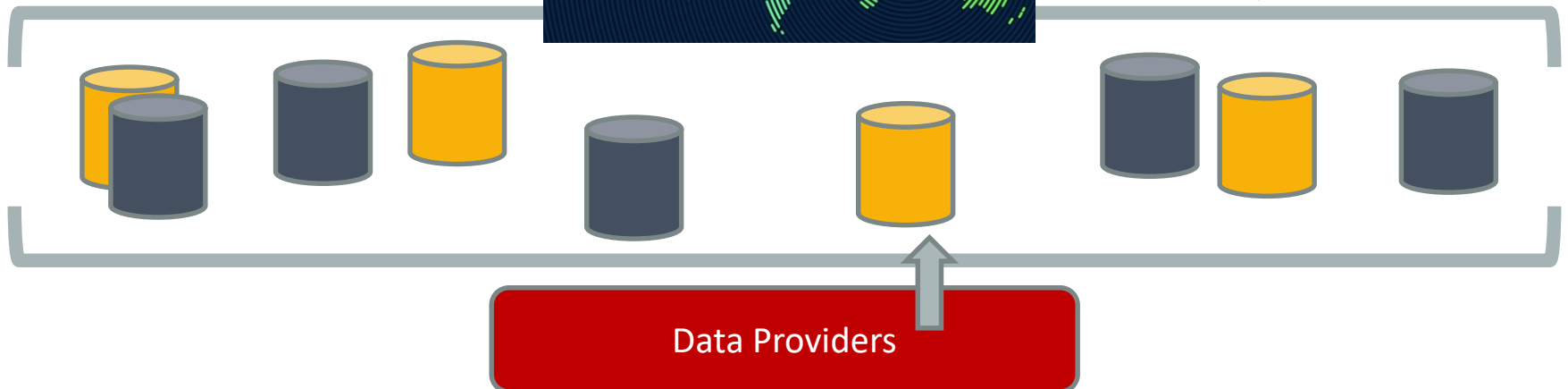
machine-readable access via API



Open access to reliable data from a single source drives innovation



In Data



Both, on the level of applications and on the level of products

Consensus of stakeholders

Basis for Legislation

Plea to policy makers



- ★ better link of building and product level
- ★ EC to support member states with template for national databases
- ★ support existing EPD solution in consistency with PEF

Consistency to PEF
Construction Products are different

EPD consistent to PEF

Technical solution available – political decision to be taken



for B2C (end-product)

PEF



for B2B (intermediate products)

EPD



PEF database to be used for calculation of EPD (background database)

Christian Donath
Managing Director

ECO Platform AISBL
Boulevard du Souverain 68, Box 1
1170 Brussels
Belgium

(E) donath@eco-platform.org
(H) www.eco-platform.org